



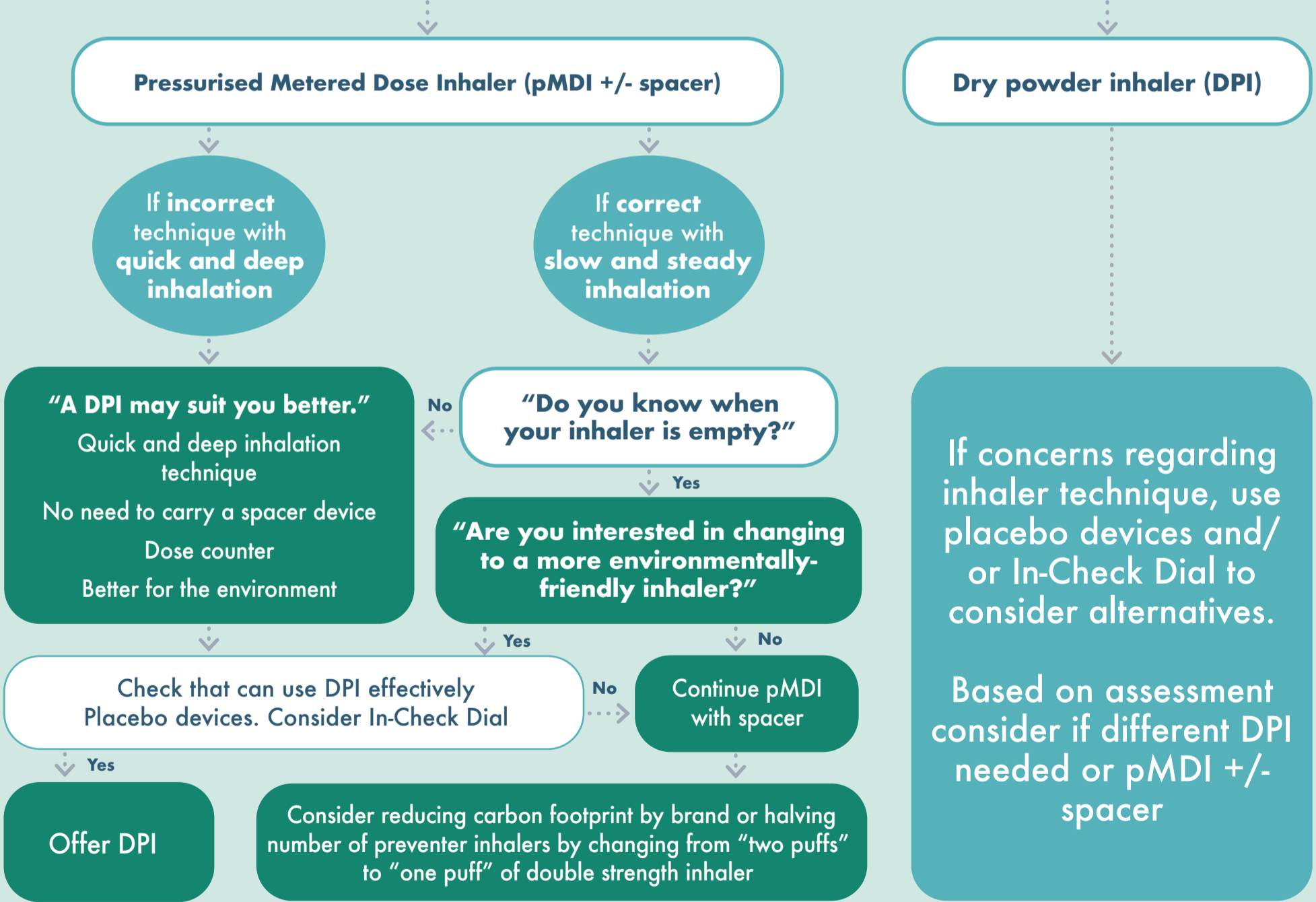
- "How is your asthma affecting you?"**
Scores, impact on life, triggers and risks.
- "What do you do when your asthma gets worse?"**
Review PAAP. Do they have a peak flow meter?
- "How often are you using your inhalers?"**
Check record for how many preventer and rescue inhalers issued.

REVIEW

Patient Empowerment
"Has anyone explained what asthma is and how your inhalers work?"
Airways diagram
"Let's talk through how to manage your asthma and what to do if it gets worse"
Triggers (inc. air quality, housing), smoking, breathing techniques, Personalised Asthma Action Plan (PAAP)

Control & Adherence
"What will help you remember to take your preventer inhaler?"
"Some people find it more convenient to use just one inhaler that contains both the preventer and rescue medicine" (ICS/LABA)

"Show me how you use your inhalers"



"Remember to take used or unwanted inhalers to the pharmacy."

